

[®]
**Pal
et
s
ta
rt
er**



HAND PALLET TRUCK OPERATORS MANUAL



271 WESTEC DR, MT PLEASANT, PA 15666

724-446-2000 • 1-800-868-5438

Fax: 724-446-0988

sales@herwin.biz

www.palletsmith.com



HAND PALLET TRUCK WARRANTY

Palletsmith® by Herwin Safety, Inc. will guarantee this product against material and manufacturing defects provided the pallet truck has been used under normal conditions.

STANDARD (3" lowered height)

LOW PROFILE (2" & 1-3/4" lowered height)

Palletsmith® will provide replacement parts for those deemed defective by **Palletsmith®**. The hydraulic pump assembly is covered for 24 months. Chassis and associated components, including handle are covered for 12 months. Wearable parts such as wheels, rollers, bushings, and bearings are covered for 6 months. Warranty begins from date of sale to the ultimate user.

HEAVY DUTY, GALVANIZED & STAINLESS STEEL

All components are covered for 6 months.

Warranty includes parts only and does not cover labor or miscellaneous costs involved in replacement of parts deemed to be defective by **Palletsmith®**.

Bent, twisted, or misaligned forks are signs of abuse and are not covered under warranty.

Pallet trucks operating under adverse conditions such as fish, meat, or poultry processing plants, freezer application, or wet environments, including bleach wash downs or salt spray are not covered under warranty. Premature wearing of components because of lack of lubrication is not covered under warranty.

To claim warranty, please call 1-800-868-5438 or email sales@herwin.biz with model number, serial number, date of purchase and nature of problem.



SAFETY PROCEDURES

- ✓ Please read and understand the operation and safety manual before operating this pallet truck.
- ✓ Never exceed the rated capacity of this hand pallet truck and always distribute the loads evenly over the width and length of the forks.
- ✓ Never pick up a load with only one fork or try to position the load with only the fork tips.
- ✓ Never put your hands or feet under or between the pallet truck frame assembly. Always wear safety shoes when operating this equipment.
- ✓ Do not allow pallet truck to "shock load" by dropping from one level to another.
- ✓ Make sure length of pallet truck forks match the length of the pallet. It is critical that the rollers drop between the pallet bottom boards.
- ✓ Hand pallet trucks are intended to be operated on hard and flat surfaces. If ramps are encountered it is recommended that a hand pallet truck with optional manual brake be used.
- ✓ Hand pallet trucks are not to be used by an operator that is not physically capable of safely maneuvering the hand pallet truck with the load.
- ✓ Like any other mechanical equipment, hand pallet trucks should be lubricated and inspected periodically (at least every six months) for loose or missing components. Report an unsafe pallet truck to your supervisor and DO NOT operate unsafe equipment.

TROUBLESHOOTING PROCEDURES

Condition	Cause	Remedy
Pump does not lift load	Air in the hydraulic system	Hold control lever in lowering position and pump handle 6-8 times
Lifting, neutral or lowering not engaging	Adjusting nut out of adjustment	Turn adjusting nut on control rod assembly (Item #4) until truck does not raise or lower in neutral position
Forks raise and lower with each stroke of pump handle	Dirt or debris in pump valving	Shock pump by lifting pallet truck off ground and dropping sharply. Hold control lever in lowering position and pump handle 6-8 times.
Pump does not lift to complete raised height	Low on oil due to leakage	Add hydraulic oil
Forks are not lowering completely	Debris in load wheels or linkage is out of adjustment or binding	Remove debris. Inspect linkage and front roller assembly for ease of movement. Adjust pushrod for equal fork movement if necessary.



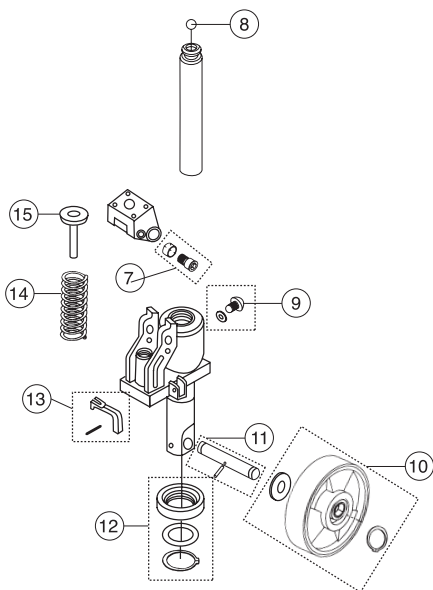
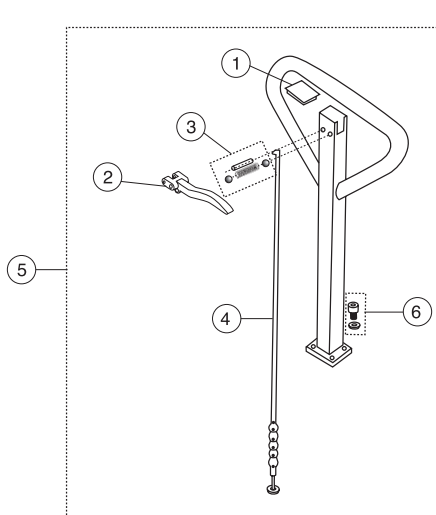
PS-Series

STANDARD - 3" LOW. HGT.

ITEM NO.	DESCRIPTION
PUMP DIAGRAM	
1	Handle Cap
2	Control Lever
3	Control Lever Kit <i>(includes split pin, spring & (2) balls)</i>
4	Control Rod Assembly <i>(includes rod, chain, adjustment bolt & adjustment nut)</i>
5	Complete Handle Assembly <i>(includes items 1-4)</i>
6	Handle Bolt <i>(includes washer)</i>
7	Handle Bracket Bolt with Bushing
8	Lift Piston Ball
9	Plug Bolt <i>(includes washer)</i>
10	Steer Wheel Assembly <i>(includes poly on steel** wheel, bearings, washer & snap ring)</i>
	**Also available in poly on nylon, white nylon or steel
11	Steer Wheel Axle <i>(includes locking pin)</i>
12	Thrust Bearing Assembly <i>(includes washer and retaining ring)</i>
13	Release Lever <i>(includes locking pin)</i>
14	Handle Return Spring
15	Pump Piston
16	Pump Rebuild Kit
17	Pump Assembly <i>(handle not included)</i>
FRAME DIAGRAM	
18	Screw
19	Torsion Bar with Bushings
20	Thrust Plate Shoulder Bolt with Bushing
21	Thrust Plate
22	Eye Bolt Pin <i>(includes locking pin)</i>
23	Pushrod Assembly <i>(includes eye bolt and nut)</i>
24	Bulkhead Pin <i>(includes locking pin)</i>
25	Load Roller Assembly <i>(includes poly on steel** roller, bearings & washers)</i>
	**Also available in poly on nylon, white nylon or steel
26	Lever Arm Assembly with bushings
27	Exit Roller Assembly <i>(includes bushings, pin & locking pin)</i>
28	Load Roller Axle <i>(includes bolt, sleeve & nut)</i>
29	Grease Fittings (3-pack)

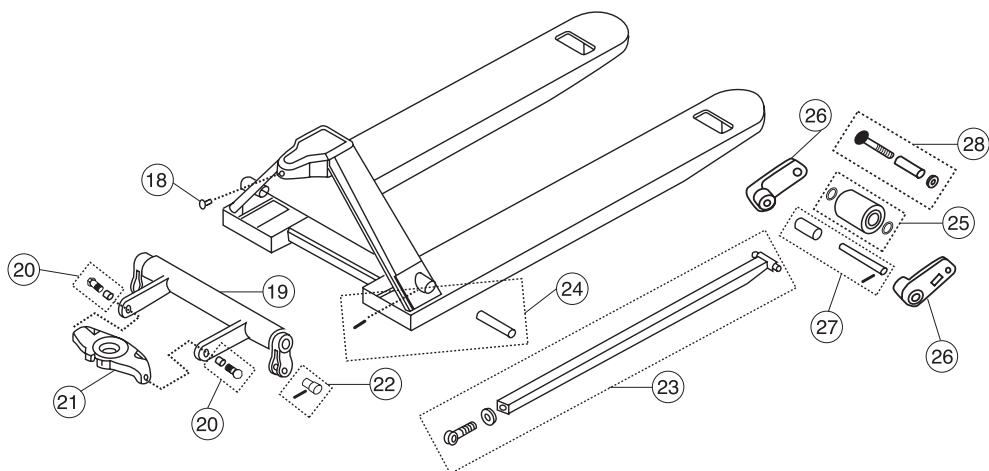
PS-Series

STANDARD - 3" LOW. HGT.



Note:

- ①⑥ Pump Rebuild Kit
(Includes All Seals and Valving)
- ①⑦ Pump Assembly
(Handle Not Included)
- ②⑨ Grease Fitting (3 pack)





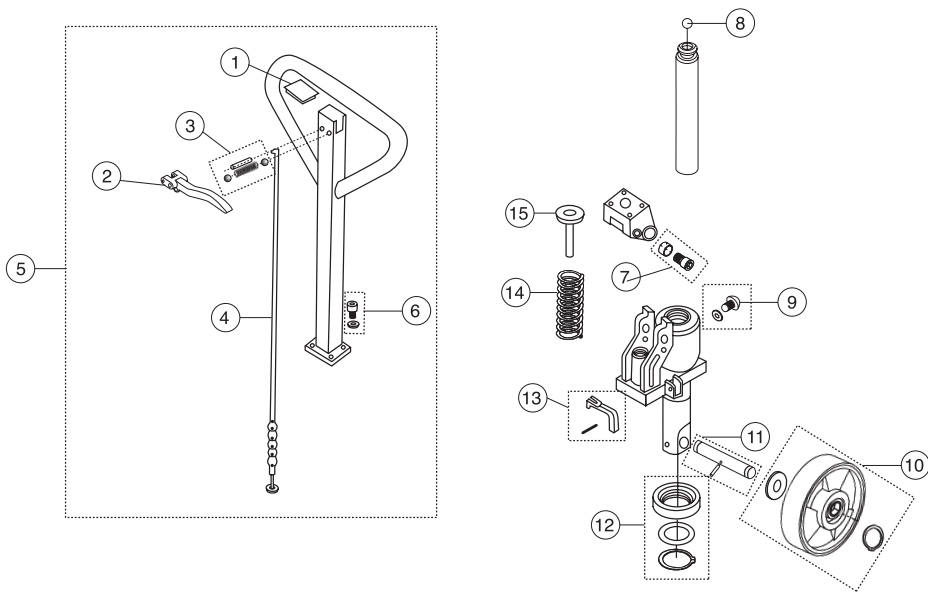
PSM-Series

LOW PROFILE - 2" LOW. HGT.

ITEM NO.	DESCRIPTION
PUMP DIAGRAM	
1	Handle Cap
2	Control Lever
3	Control Lever Kit (<i>includes split pin, spring & (2) balls</i>)
4	Control Rod Assembly (<i>includes rod, chain, adjustment bolt & adjustment nut</i>)
5	Complete Handle Assembly (<i>includes items 1-4</i>)
6	Handle Bolt (<i>includes washer</i>)
7	Handle Bracket Bolt with Bushing
8	Lift Piston Ball
9	Plug Bolt (<i>includes washer</i>)
10	Steer Wheel Assembly (<i>includes poly on steel** wheel, bearings, washer & snap ring</i>)
	**Also available in poly on nylon, white nylon or steel
11	Steer Wheel Axle (<i>includes locking pin</i>)
12	Thrust Bearing Assembly (<i>includes washer and retaining ring</i>)
13	Release Lever (<i>includes locking pin</i>)
14	Handle Return Spring
15	Pump Piston
16	Pump Rebuild Kit
17	Pump Assembly (<i>handle not included</i>)
FRAME DIAGRAM	
18	Screw
19	Torsion Bar with Bushings
20	Thrust Plate Shoulder Bolt with Bushing
21	Thrust Plate
22	Eye Bolt Pin (<i>includes locking pin</i>)
23	Pushrod Assembly (<i>includes eye bolt and nut</i>)
24	Bulkhead Pin (<i>includes locking pin</i>)
25	Load Roller Assembly (<i>includes steel** roller, bearings and washers</i>)
	**Also available in poly on steel
26	Lever Arm Assembly with bushings
27	Exit Roller Assembly (<i>includes bushings, pin & locking pin</i>)
28	Load Roller Axle (<i>includes bolt, sleeve & nut</i>)
29	Grease Fittings (3-pack)

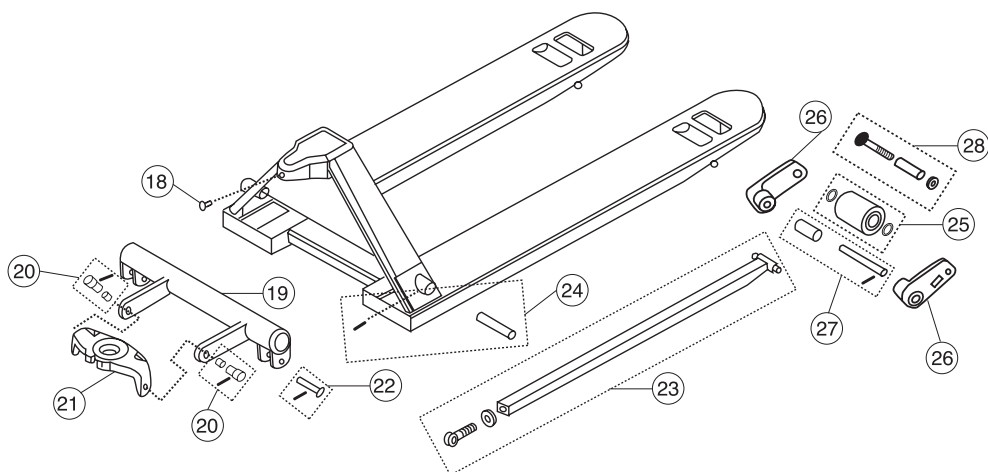
PSM-Series

LOW PROFILE - 2" LOW. HGT.



Note:

- (16) Pump Rebuild Kit
(Includes All Seals and Valving)
- (17) Pump Assembly
(Handle Not Included)
- (29) Grease Fitting (3 pack)





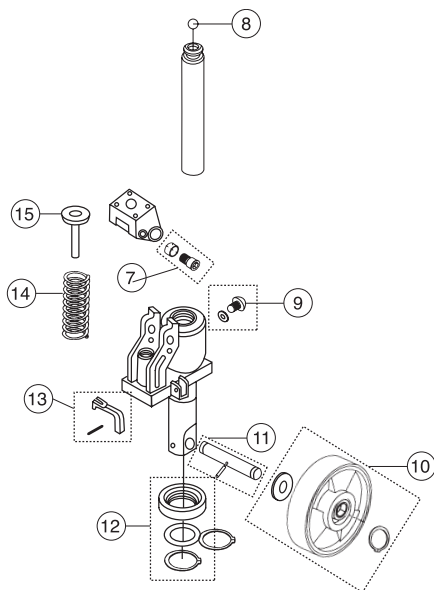
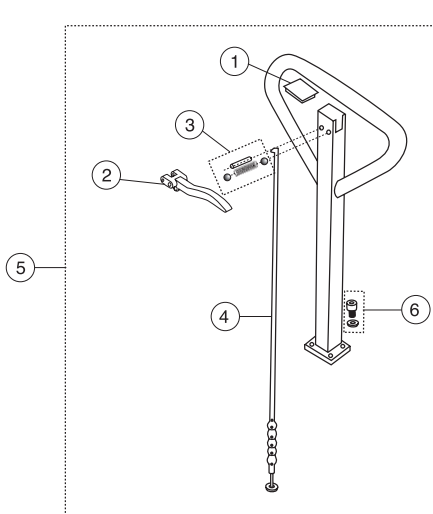
PSU3348-Series

LOW PROFILE - 1-3/4" LOW. HGT.

ITEM NO.	DESCRIPTION
PUMP DIAGRAM	
1	Handle Cap
2	Control Lever
3	Control Lever Kit (<i>includes split pin, spring & (2) balls</i>)
4	Control Rod Assembly (<i>includes rod, chain, adjustment bolt & adjustment nut</i>)
5	Complete Handle Assembly (<i>includes items 1-4</i>)
6	Handle Bolt (<i>includes washer</i>)
7	Handle Bracket Bolt with Bushing
8	Lift Piston Ball
9	Plug Bolt (<i>includes washer</i>)
10	Steer Wheel Assembly (<i>includes poly on steel** wheel, bearings, washer & snap ring</i>)
	<i>**Also available in poly on nylon, white nylon or steel</i>
11	Steer Wheel Axle (<i>includes locking pin</i>)
12	Thrust Bearing Assembly (<i>includes washer and retaining ring</i>)
13	Release Lever (<i>includes locking pin</i>)
14	Handle Return Spring
15	Pump Piston
16	Pump Rebuild Kit
17	Pump Assembly (<i>handle not included</i>)
FRAME DIAGRAM	
18	Screw
19	Torsion Bar with Bushings
20	Thrust Plate Shoulder Bolt with Bushing
21	Thrust Plate
22	Eye Bolt Pin (<i>includes locking pin</i>)
23	Pushrod Assembly (<i>includes eye bolt and nut</i>)
24	Bulkhead Pin (<i>includes locking pin</i>)
25	Load Roller Assembly (<i>includes steel** roller, bearings and washers</i>)
	<i>**Also available in poly on steel</i>
26	Lever Arm Assembly with bushings
27	Exit Roller Assembly (<i>includes bushings, pin & locking pin</i>)
28	Load Roller Axle (<i>includes bolt, sleeve & nut</i>)
29	Grease Fittings (3-pack)

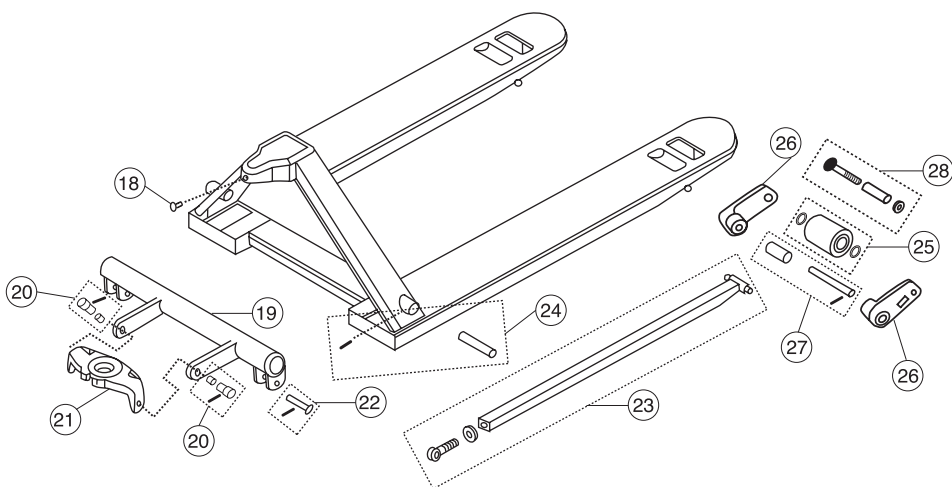
PSU3348-Series

LOW PROFILE - 1-3/4" LOW. HGT.



Note:

- ①⑥ Pump Rebuild Kit
(Includes All Seals and Valving)
- ①⑦ Pump Assembly
(Handle Not Included)
- ②⑨ Grease Fitting (3 pack)





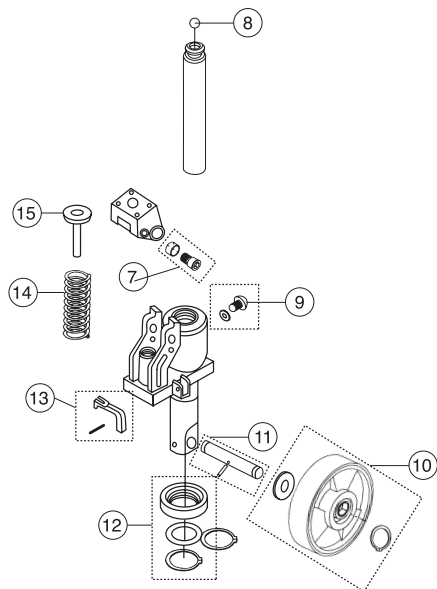
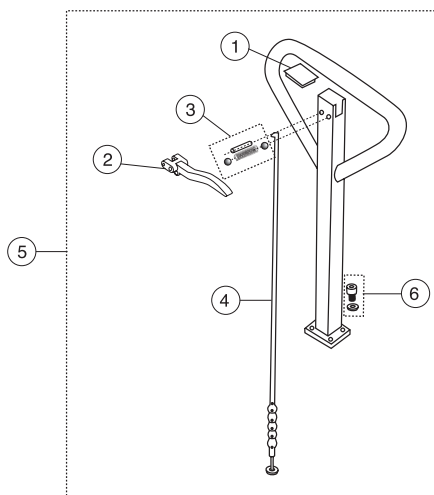
PSH-Series

HEAVY DUTY - 3-1/4" LOW. HGT.

ITEM NO.	DESCRIPTION
PUMP DIAGRAM	
1	Handle Cap
2	Control Lever
3	Control Lever Kit <i>(includes split pin, spring & (2) balls)</i>
4	Control Rod Assembly <i>(includes rod, chain, adjustment bolt & adjustment nut)</i>
5	Complete Handle Assembly <i>(includes items 1-4)</i>
6	Handle Bolt <i>(includes washer)</i>
7	Handle Bracket Bolt with Bushing
8	Lift Piston Ball
9	Plug Bolt <i>(includes washer)</i>
10	Steer Wheel Assembly <i>(includes steel** wheel, bearings, washer & snap ring)</i>
11	Steer Wheel Axle <i>(includes locking pin)</i>
12	Thrust Bearing Assembly <i>(includes washer and retaining ring)</i>
13	Release Lever <i>(includes locking pin)</i>
14	Handle Return Spring
15	Pump Piston
16	Pump Rebuild Kit
17	Pump Assembly <i>(handle not included)</i>
FRAME DIAGRAM	
18	Screw
19	Torsion Bar with Bushings
20	Thrust Plate Shoulder Bolt with Bushing
21	Thrust Plate
22	Eye Bolt Pin <i>(includes locking pin)</i>
23	Pushrod Assembly <i>(includes eye bolt and nut)</i>
24	Bulkhead Pin <i>(includes locking pin)</i>
25	Load Roller Assembly <i>(includes steel roller, bearings and washers)</i>
26	Lever Arm Assembly with bushings
27	Exit Roller Assembly <i>(includes bushings, pin & locking pin)</i>
28	Load Roller Axle <i>(includes bolt, sleeve & nut)</i>
29	Grease Fittings (3-pack)

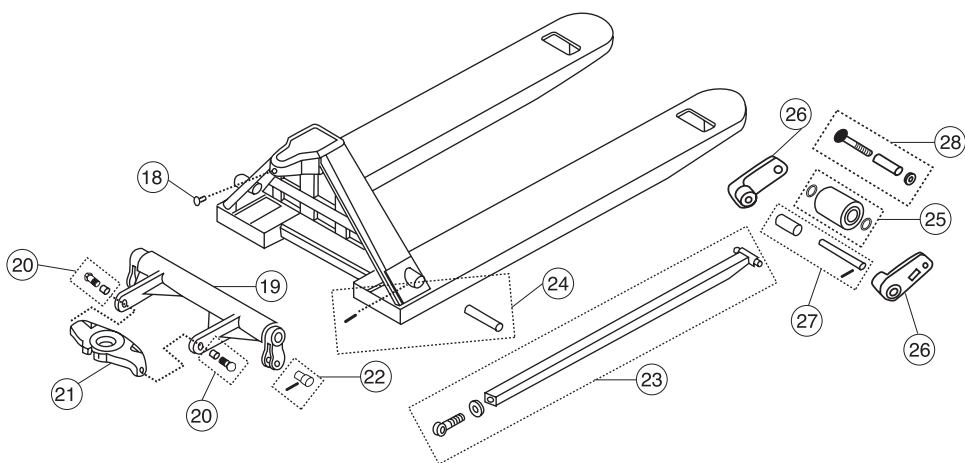
PSH-Series

HEAVY DUTY - 3-1/4" LOW. HGT.



Note:

- 16 Pump Rebuild Kit
(Includes All Seals and Valving)
- 17 Pump Assembly
(Handle Not Included)
- 29 Grease Fitting (3 pack)





HERWIN SAFETY, INC.

271 WESTEC DR, MT PLEASANT, PA 15666

724-446-2000 • 1-800-868-5438

Fax: 724-446-0988

sales@herwin.biz

www.palletsmith.com