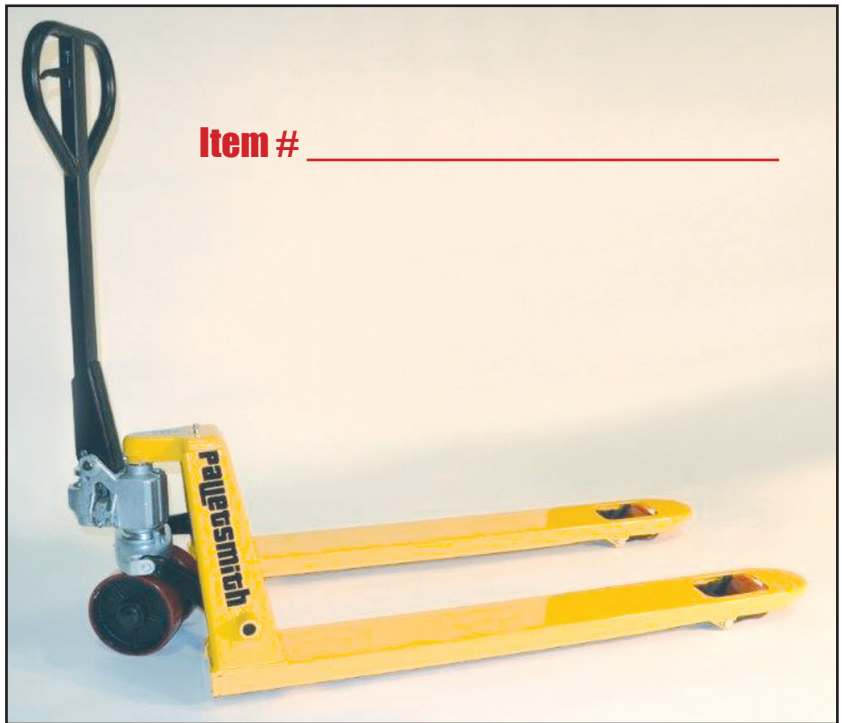




“NP” SERIES HAND PALLET TRUCK OPERATORS MANUAL



Item # _____

**271 WESTEC DR, MT PLEASANT, PA 15666
724-446-2000 • 1-800-868-5438**

Fax: 724-446-0988

sales@herwin.biz

www.palletsmith.com





NP SERIES

HAND PALLET TRUCK WARRANTY

Palletsmith® by Herwin Safety, Inc. will guarantee this product against material and manufacturing defects provided the pallet truck has been used under normal conditions.

STANDARD (3" lowered height)

LOW PROFILE (2" lowered height)

Palletsmith® will provide replacement parts for those deemed defective by **Palletsmith®**. The hydraulic pump assembly is covered for 24 months. Chassis and associated components, including handle are covered for 12 months. Wearable parts such as wheels, rollers, bushings, and bearings are covered for 6 months. Warranty begins from date of sale to the ultimate user.

Warranty includes parts only and does not cover labor or miscellaneous costs involved in replacement of parts deemed to be defective by **Palletsmith®**.

Bent, twisted, or misaligned forks are signs of abuse and are not covered under warranty.

Pallet trucks operating under adverse conditions such as fish, meat, or poultry processing plants, freezer application, or wet environments, including bleach wash downs or salt spray are not covered under warranty. Premature wearing of components because of lack of lubrication is not covered under warranty.

To claim warranty, please call 1-800-868-5438 or email sales@herwin.biz with model number, serial number, date of purchase and nature of problem.



SAFETY PROCEDURES

- ✓ Please read and understand the operation and safety manual before operating this pallet truck.
- ✓ Never exceed the rated capacity of this hand pallet truck and always distribute the loads evenly over the width and length of the forks.
- ✓ Never pick up a load with only one fork or try to position the load with only the fork tips.
- ✓ Never put your hands or feet under or between the pallet truck frame assembly. Always wear safety shoes when operating this equipment.
- ✓ Do not allow pallet truck to “shock load” by dropping from one level to another.
- ✓ Make sure length of pallet truck forks match the length of the pallet. It is critical that the rollers drop between the pallet bottom boards.
- ✓ Hand pallet trucks are intended to be operated on hard and flat surfaces.
- ✓ Hand pallet trucks are not to be used by an operator that is not physically capable of safely maneuvering the hand pallet truck with the load.
- ✓ Like any other mechanical equipment, hand pallet trucks should be lubricated and inspected periodically (at least every six months) for loose or missing components. Report an unsafe pallet truck to your supervisor and DO NOT operate unsafe equipment.
- ✓ Medium grade hydraulic oil is recommended except when used below 32 degrees, then use Shell Tellus V22 oil or equivalent.

TROUBLESHOOTING PROCEDURES

Condition	Cause	Remedy
Pump does not lift load	Air in the hydraulic system	Hold control lever in lowering position and pump handle 6-8 times
Lifting, neutral or lowering not engaging	Screw on release lever out of adjustment	Loosen nut, on side of pump turn set screw until truck does not raise or lower in neutral position.
Forks raise and lower with each stroke of pump handle	Dirt or debris in pump valving	Shock pump by lifting pallet truck off ground and dropping sharply away from feet. Hold control lever in lowering position and pump handle 6-8 times.
Pump does not lift to complete raised height	Low on oil due to leakage	Add hydraulic oil. Place truck in lowered position, remove plug bolt (Item # 13) Add hydraulic oil to plug bolt level. Reinstall plug bolt
Forks are not lowering completely	Debris in load wheels or linkage is out of adjustment or binding	Remove debris. Inspect linkage and front roller assembly for ease of movement. Adjust pushrod for equal fork movement if necessary. Retighten loose componentry.



NP-Series

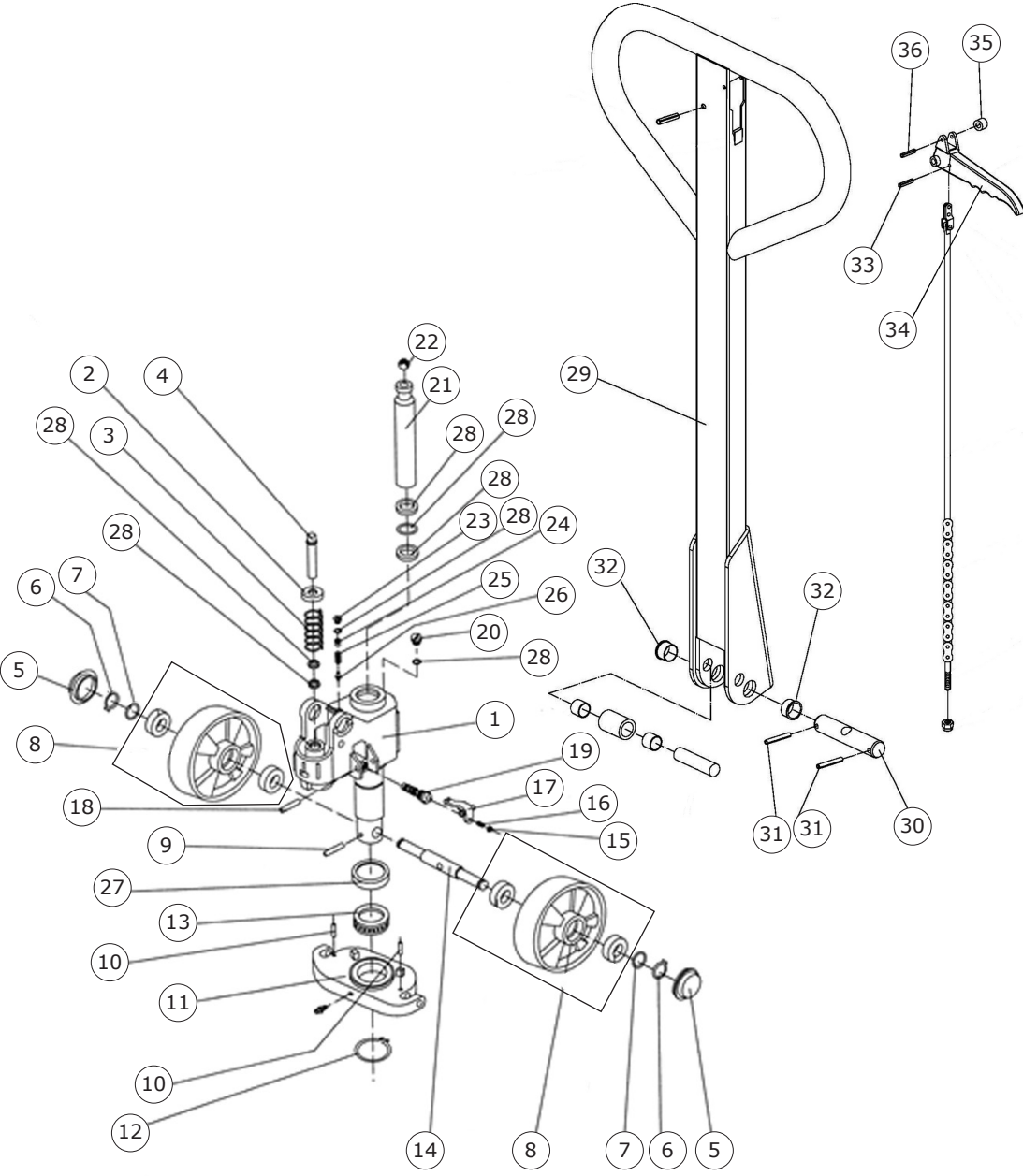
STANDARD 3" LOW. HGT.

PUMP DIAGRAM

ITEM NO.	DESCRIPTION
1	Pump Assembly
2	Spring Cap
3	Spring
4	Pump Piston
5	Dust Cover
6	Locking Ring
7	Washer
8	Steer Wheel with Bearings (available in poly on steel, steel or nylon)
9	Pin
10	Pin
11	Base
12	Locking Ring
13	Bearing
14	Shaft for Steering Wheel
15	Nut
16	Screw
17	Release Lever
18	Elastic Pin
19	Valve Cartridge
20	Valve Bolt
21	Lift Piston
22	Steel Ball
23	Plug
24	Valve Seat
25	Spring
26	Spindle
27	Cover for Bearing
28	Seal Kit
29	Type B Handle Bar Assy
30	Axle (with hole)
31	Spring Pin
32	Bushing
33	Spring Pin
34	Control Lever
35	Roller
36	Spring Pin

NP-Series Pump Diagram

STANDARD 3" LOW. HGT.





NP-Series

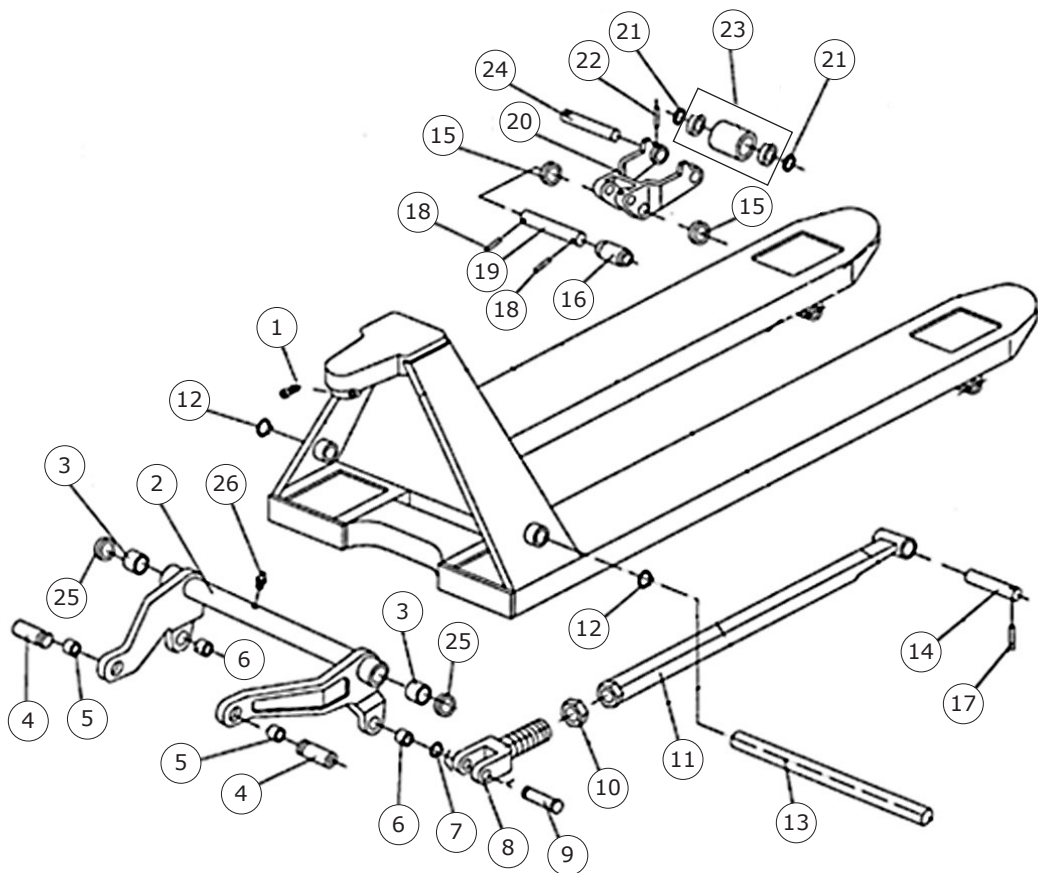
STANDARD 3" LOW. HGT.

FRAME DIAGRAM

ITEM NO.	DESCRIPTION
1	Screw
2	Rocker Arm
3	Sleeve
4	Pin
5	Bushing
6	Bushing
7	Retaining Ring
8	Joint
9	Pin
10	Nut
11	Pushing Rod
12	Retaining Ring
13	Rocker Rod
14	Push Rod Pin
15	Intermediate Bushing
16	Exit Roller
17	Elastic Pin
18	Elastic Pin
19	Load Wheel Hanger Shaft
20	Load Wheel Hanger
21	Washer
22	Elastic Pin
23	Load Roller with Bearings (available in poly on steel, nylon or steel)
24	Load Wheel Shaft
25	Sleeve
26	Grease Valve

NP-Series Frame Diagram

STANDARD 3" LOW. HGT.





NPM-Series

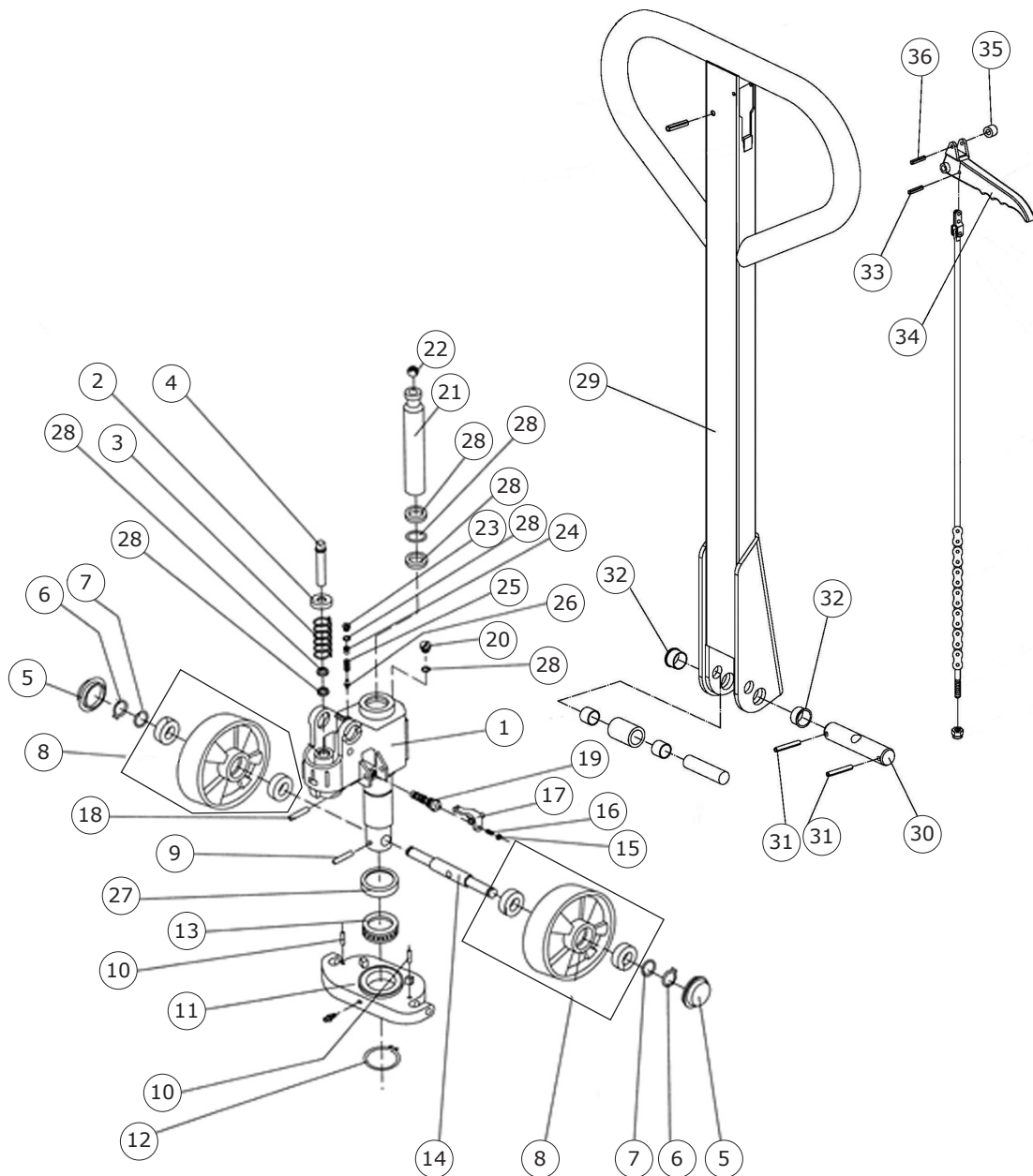
LOW PROFILE 2" LOW. HGT.

PUMP DIAGRAM

ITEM NO.	DESCRIPTION
1	Pump Assembly
2	Spring Cap
3	Spring
4	Pump Piston
5	Dust Cover
6	Locking Ring
7	Washer
8	Steer Wheel with Bearings (available in poly on steel, steel or nylon)
9	Pin
10	Pin
11	Base
12	Locking Ring
13	Bearing
14	Shaft for Steering Wheel
15	Nut
16	Screw
17	Release Lever
18	Elastic Pin
19	Valve Cartridge
20	Valve Bolt
21	Lift Piston
22	Steel Ball
23	Plug
24	Valve Seat
25	Spring
26	Spindle
27	Cover for Bearing
28	Seal Kit
29	Type B Handle Bar Assy
30	Axle (with hole)
31	Spring Pin
32	Bushing
33	Spring Pin
34	Control Lever
35	Roller
36	Spring Pin

NPM-Series Pump Diagram

LOW PROFILE 2" LOW. HGT.





NPM-Series

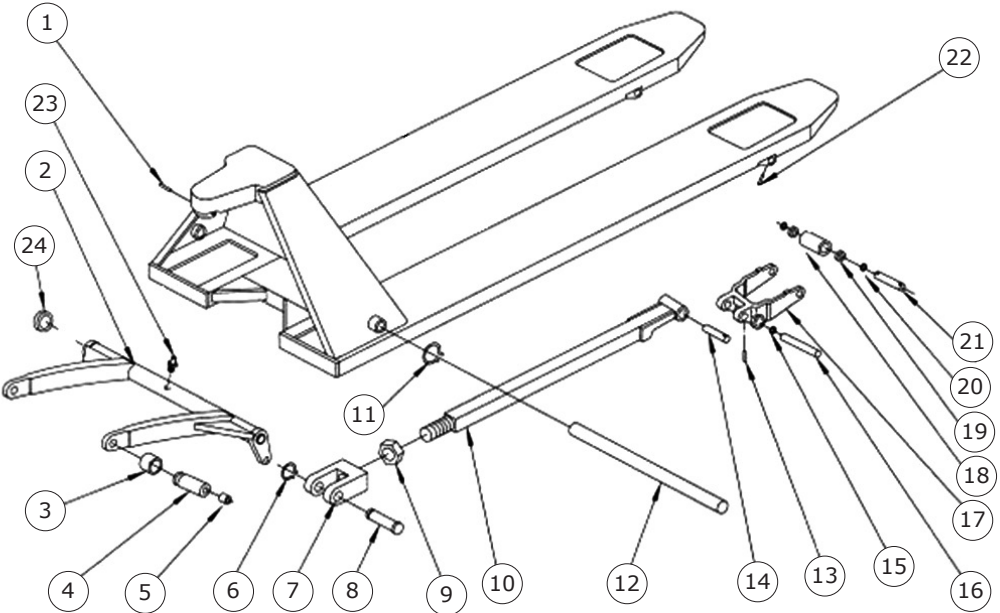
LOW PROFILE 2" LOW. HGT.

FRAME DIAGRAM

ITEM NO.	DESCRIPTION
1	Pin
2	Rocker Arm
3	Bushing
4	Shaft
5	Grease Cup
6	Retaining Ring
7	Joint
8	Pin
9	Nut
10	Pushing Rod
11	Retaining Ring
12	Rocker Rod
13	Pin
14	Push Rod Pin
15	Washer
16	Shaft
17	Load Wheel Bracket
18	Load Wheel
19	Bearing
20	Washer
21	Load Wheel Axle
22	Elastic Pin
23	Grease Cup
24	Washer

NPM-Series Frame Diagram

LOW PROFILE 2" LOW. HGT.





NPM-4-WAY-Series

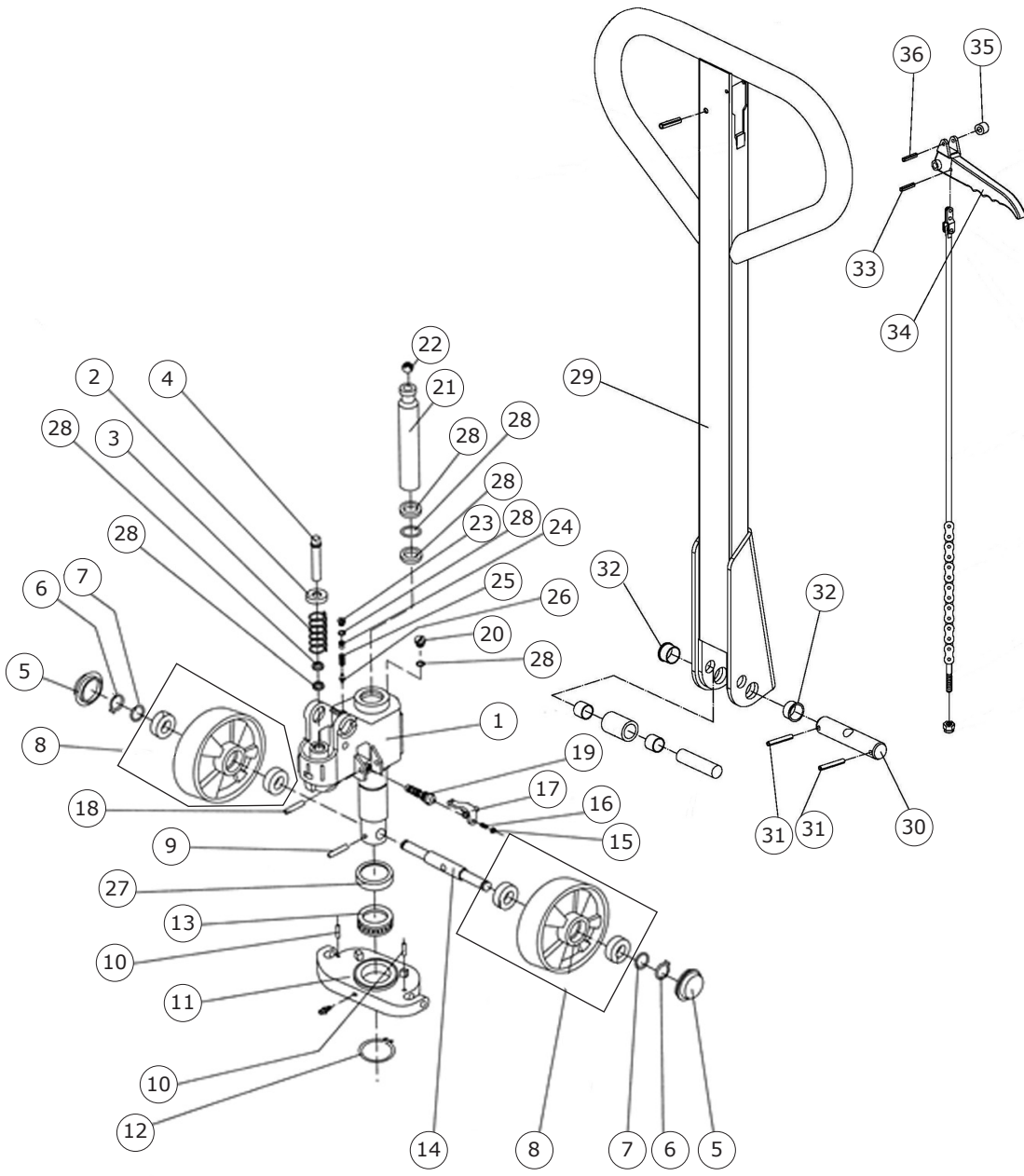
LOW PROFILE 2" LOW. HGT.

PUMP DIAGRAM

ITEM NO.	DESCRIPTION
1	Pump Assembly
2	Spring Cap
3	Spring
4	Pump Piston
5	Dust Cover
6	Locking Ring
7	Washer
8	Steer Wheel with Bearings (available in poly on steel, steel or nylon)
9	Pin
10	Pin
11	Base
12	Locking Ring
13	Bearing
14	Shaft for Steering Wheel
15	Nut
16	Screw
17	Release Lever
18	Elastic Pin
19	Valve Cartridge
20	Valve Bolt
21	Lift Piston
22	Steel Ball
23	Plug
24	Valve Seat
25	Spring
26	Spindle
27	Cover for Bearing
28	Seal Kit
29	Type B Handle Bar Assy
30	Axle (with hole)
31	Spring Pin
32	Bushing
33	Spring Pin
34	Control Lever
35	Roller
36	Spring Pin

NPM-4-WAY-Series Pump Diagram

LOW PROFILE 2" LOW. HGT.





NPM-4-WAY-Series

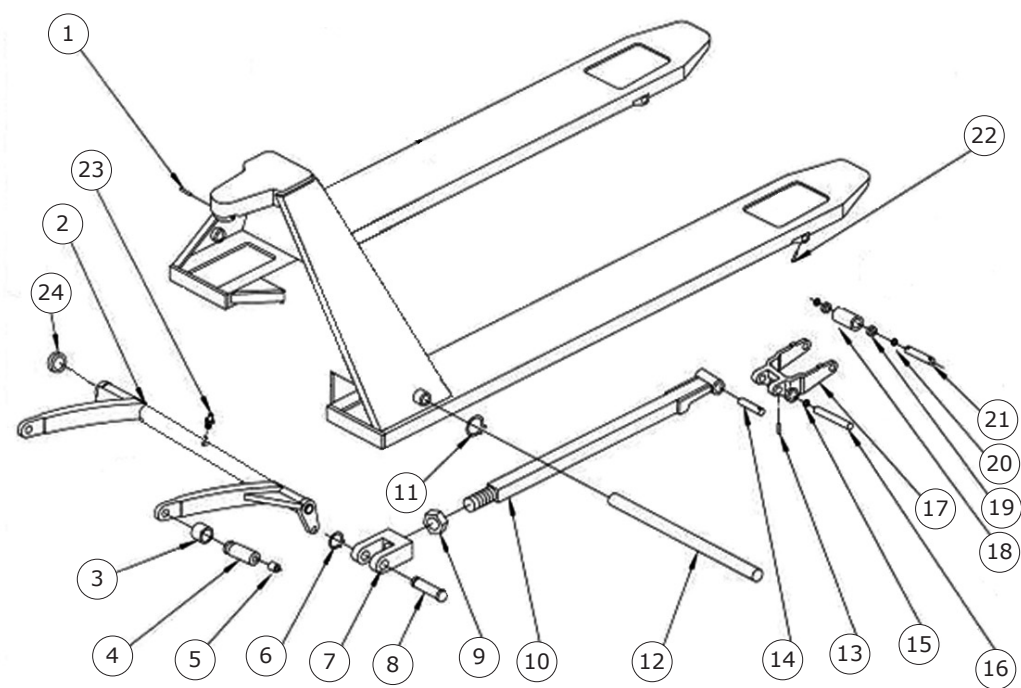
LOW PROFILE 2" LOW. HGT..

FRAME DIAGRAM

ITEM NO.	DESCRIPTION
1	Pin
2	Rocker Arm
3	Bushing
4	Shaft
5	Grease Cup
6	Retaining Ring
7	Joint
8	Pin
9	Nut
10	Pushing Rod
11	Retaining Ring
12	Rocker Rod
13	Pin
14	Push Rod Pin
15	Washer
16	Shaft
17	Load Wheel Bracket
18	Load Wheel
19	Bearing
20	Washer
21	Load Wheel Axle
22	Elastic Pin
23	Grease Cup
24	Washer

NPM-4-WAY-Series Frame Diagram

LOW PROFILE 2" LOW. HGT



palletsmith®



HERWIN SAFETY, INC.

271 WESTEC DR, MT PLEASANT, PA 15666

724-446-2000 • 1-800-868-5438

Fax: 724-446-0988

sales@herwin.biz

www.palletsmith.com

